

# Architext

Winter 2008

## AIA Central Pennsylvania

The Newsletter of AIA Central Pennsylvania



A Chapter of  
The American  
Institute of Architects

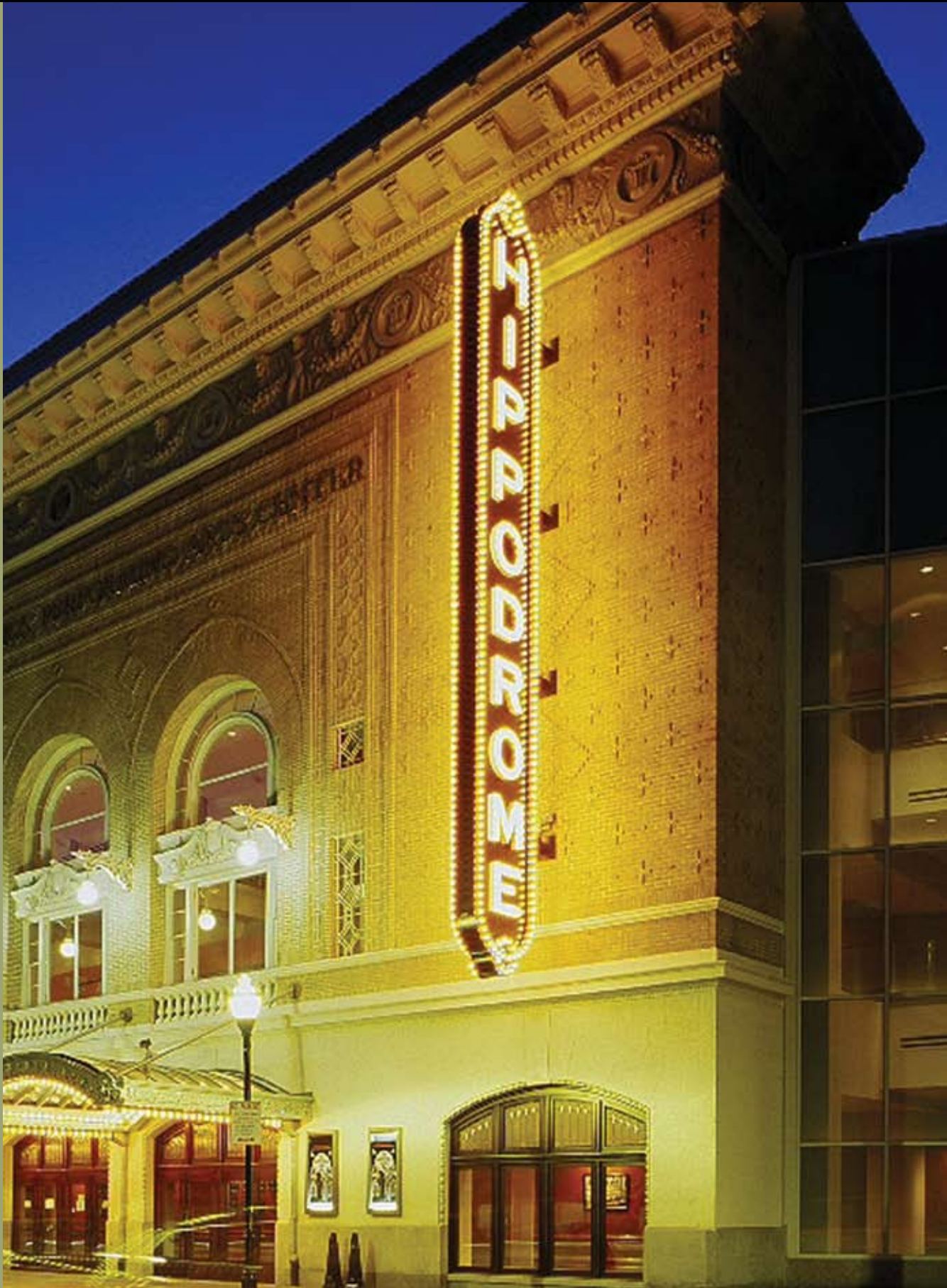
### Inside this Issue

- 2 2008 Board Directory
- 3 President's Message
- 4 AIA Central PA Calendar
- 5 Central PA AIA 2008  
Lecture Series
- 6 2007 Excellence In Design  
Awards Gala
- 9 Letter to Associates
- 10 Architects Expo 2008
- 11 ACE Mentor Program

### AIA Central Pennsylvania

A Chapter of The American  
Institute of Architects  
208 N. Third Street, Suite 400  
Harrisburg, PA 17101

717.236.8969 Voice  
717.236.5407 Fax  
aiacpc@aiacentralpa.org





# Mission Statement of the AIA

## To advance the practice of Architecture.

### 2008 Board Directory

#### President

**James R. Thompson, AIA**  
Hayes Large Architects  
75 South Houcks Road, Ste. 300  
Harrisburg, PA 17109  
Phone: (717) 238-4795  
Fax: (717) 238-4800  
jrthompson@hayeslarge.com

#### Vice President / Secretary

**Matthew R. Luttrell, AIA**  
Professional Practice Chairman  
AUM Architecture, LLC  
2101 North Front Street  
Building 1, Suite 100  
Harrisburg, PA 17110  
Phone: (717) 236-2266  
Fax: (717) 236-1655  
mattl@aum-architecture.com

#### Treasurer

**Christopher Dawson, AIA**  
Lecture Series Chairman  
LSC Design, Inc.  
1110 East Princess Street  
York, PA 17403-2543  
Phone: (717) 845-8595  
Fax: (717) 845-8177  
cdawson@lscdesign.com

#### Immediate Past President

**D. Hunter Johnson, AIA**  
Communications Chairman  
Beyond Architecture, LLC  
620 East Oregon Road  
Lititz, PA 17543  
Phone: (717) 283-0095  
Fax: (717) 283-0097  
hunterj@beyondarchitecture.net

#### State Directors

**Frank E. Dittenhafer, II, FAIA**  
Murphy & Dittenhafer, Inc.  
226 West Market Street  
York, PA 17401-1008  
Phone: (717) 848-8627  
Fax: (717) 843-2449  
fed@murphdittarch.com

#### Bruce R. Johnson, AIA

Murphy & Dittenhafer, Inc.  
226 West Market Street  
York, PA 17401-1008  
Phone: (717) 848-8627  
Fax: (717) 843-2449  
brj@murphdittarch.com

#### Associate Members

**Anthony Colestock, Assoc. AIA**  
Crabtree, Rohrbaugh & Associates  
Architects  
401 East Winding Hill Road  
Mechanicsburg, PA 17055  
Phone: (717) 458-0272  
Fax: (717) 458-0047  
acolestock@cra-architects.com

#### Seth H. Wentz, Assoc. AIA

LSC Design, Inc.  
1110 East Princess Street  
York, PA 17403-2543  
Phone: (717) 845-8383  
Fax: (717) 852-0916  
swentz@lscdesign.com

#### Affiliate Member

**Joshua M. Carney, PE**  
C.S. Davidson, Inc.  
38 North Duke Street  
York, PA 17401  
Phone: (717) 846-4805  
Fax: (717) 846-5811  
jmc@csdavidson.com

#### At-Large Members

**Richard A. Gribble, AIA**  
McKissick Associates, PC  
317 North Front Street  
Harrisburg, PA 17101  
Phone: (717) 238-6810  
Fax: (717) 238-6830  
rgribble@mckissickassociates.com

#### F. Joshua Millman, AIA

Facilities Planners + Architects  
4201 East Park Circle  
Harrisburg, PA 17111  
Phone: (717) 221-9700  
Fax: (717) 221-1185  
jmillman@facplan.com

#### John N. Myers, AIA

Facilities Planners + Architects  
4201 East Park Circle  
Harrisburg, PA 17111  
Phone: (717) 221-9700  
Fax: (717) 221-1185  
jmyers@facplan.com

#### R. Jeffrey Straub, AIA

Crabtree, Rohrbaugh and  
Associates Architects  
401 East Winding Hill Road  
Mechanicsburg, PA 17055  
Phone: (717) 458-0272  
Fax: (717) 458-0349  
jstraub@cra-architects.com

#### Student Affiliate Member

**Scott Beisel**  
136 Walnut Street  
Mont Clare, PA 19453  
Phone: (484) 942-9477  
sdbiesel@stevenscollege.edu

*On The Cover:*  
Hippodrome Performing  
Arts Center – Historic  
Restoration by Murphy &  
Dittenhafer Architects, Inc.

**AW**  
WINDOWS + DOORS  
**Andersen**

**Reduces Water Spots Up To 99%\***

**LOW 4**  
HIGH-PERFORMANCE  
LOW-E4 GLASS

Ordinary Glass      High-Performance Low-E4 Glass

\*When activated by sunlight. Exterior glass only.



## President's Message – Call To Service

*By James R. Thompson, AIA*

The year two-thousand nine marks the centennial of the Central Pennsylvania Chapter of The American Institute of Architects. It might surprise you to know that The Chapter boundaries extend beyond Sunbury to the north, McConnellsburg to the west, Ephrata to the East and Gettysburg to the south. AIA members shape that built environment for the benefit of the nearly two million residents that live here today.

We often celebrate an Architect's career in terms of the built result of a life of service or a memorable project. How will we celebrate over twenty million hours of cumulative practice for the betterment of the built environment over the past one-hundred year period? We could:

- Remember the fabric of service woven through the careers of hundreds of AIA Central Pennsylvania Chapter members
- Celebrate the architecture of our communities
- Remember the service to the Chapter by our members, including volunteer service to the Pennsylvania and National AIA
- Build-up the endowment of the Chapter Foundation for our future benefit
- Share our stories with the communities that we serve
- Chart a new course for the next one hundred years in collaboration with a network of leaders from our local communities

Frances Hesselbein, former-CEO of the Girl Scouts of America, spoke at the 2008 AIA National Grassroots Conference. She reminded us that non-profit organizations, exemplified by the AIA, have a distinct societal role apart from the role of government and commerce. In the mid-70s, when most of us weren't yet practicing architecture, Frances Hesselbein breathed new life into the Girl Scouts of America with a message of cultural diversity and inclusion. The Girl Scout leaders listened to their constituents to learn the issues of that day in a shared strategic planning process. Thirty years later, this message remains timely for the AIA; listening to our constituency.

I call on you to join our Centennial planning process. We will build a network of friends and partnerships this year to help us launch a new century of service to Central Pennsylvania.

*Join the network by emailing me at [JRThompson@HayesLarge.com](mailto:JRThompson@HayesLarge.com) to tell me a part of the AIA Central Pennsylvania Chapter first-one-hundred-years story; your favorite built environment, inspiration, passion or perspective. □*



James R. Thompson



**We will build a network of friends and partnerships this year to help us launch a new century of service to Central Pennsylvania.**

## 2008 AIA Central PA Calendar

**April 18**

Day Conference & Expo, Harrisburg

**May 15-17**

National Convention, Boston, MA

**May 26**

Office Closed – Memorial Day

**June 5**

Spring Lecture

**June 21**

Board Meeting, Location: Home of Jim Thompson

**July 4**

Office Closed – Independence Day

**July TBD**

Summer Lecture

**September 1**

Office Closed – Labor Day

**September 4**

Board Meeting at 4:30 pm

**September TBD**

Fall Lecture

**October 10**

Design Awards Banquet, Lancaster

**October 13**

Office Closed – Columbus Day

**October 16**

Board Meeting at 4:30 pm

**November 18-19**

Architects Day & Leadership Conference

**November 27-28**

Office Closed – Thanksgiving Holiday

**December 13**

Board Planning Meeting

**December 24-25**

Office Closed – Christmas Holidays

*Green should be reflected in your designs, not your abilities!*

Building Information Modeling should be part of every architect and engineer's toolkit – let Synergis train you in the skills necessary to achieve continuing economic prosperity while protecting the natural systems of the planet and providing a higher quality of life for this generation and generations to come.

Green ideas realized!



Visit [www.synergis.com](http://www.synergis.com) or call 800-836-5440 today.

**Autodesk**  
Authorized Value Added Reseller

## Central PA AIA 2008 Lecture Series

*By Chris Dawson, AIA*

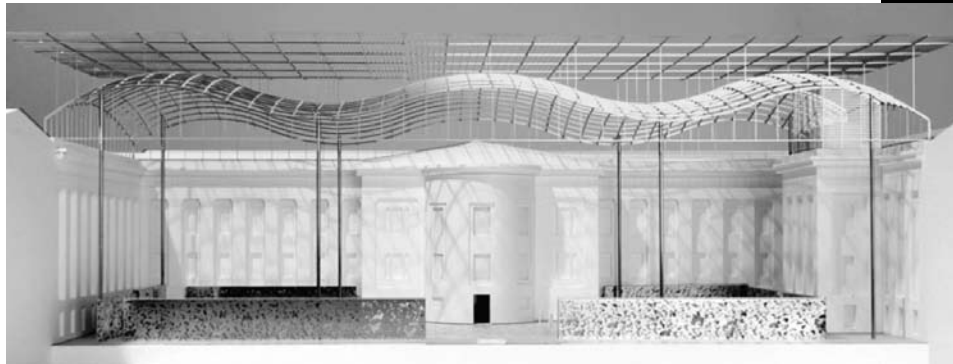
Although we are still in the process of finalizing arrangements for the Spring Lecture and it would be premature to announce the speaker we will widely publicize who it will be once we have a firm commitment.

We have a commitment from Toshiko Mori to make the Fall Lecture which will again be held at the Armstrong World Industries corporate campus in Lancaster this Fall. Toshiko Mori, FAIA is the Robert P. Hubbard Professor in the Practice of Architecture and the chair of the Department of Architecture at Harvard Graduate School of Design since 2002. She is also principal of Toshiko

Mori Architect, which she established in 1981 in New York City. Mori taught at the Cooper Union School of Architecture from 1983, until joining the Harvard GSD faculty with tenure in 1995. She has been a visiting faculty member at Columbia University and Yale University, where she

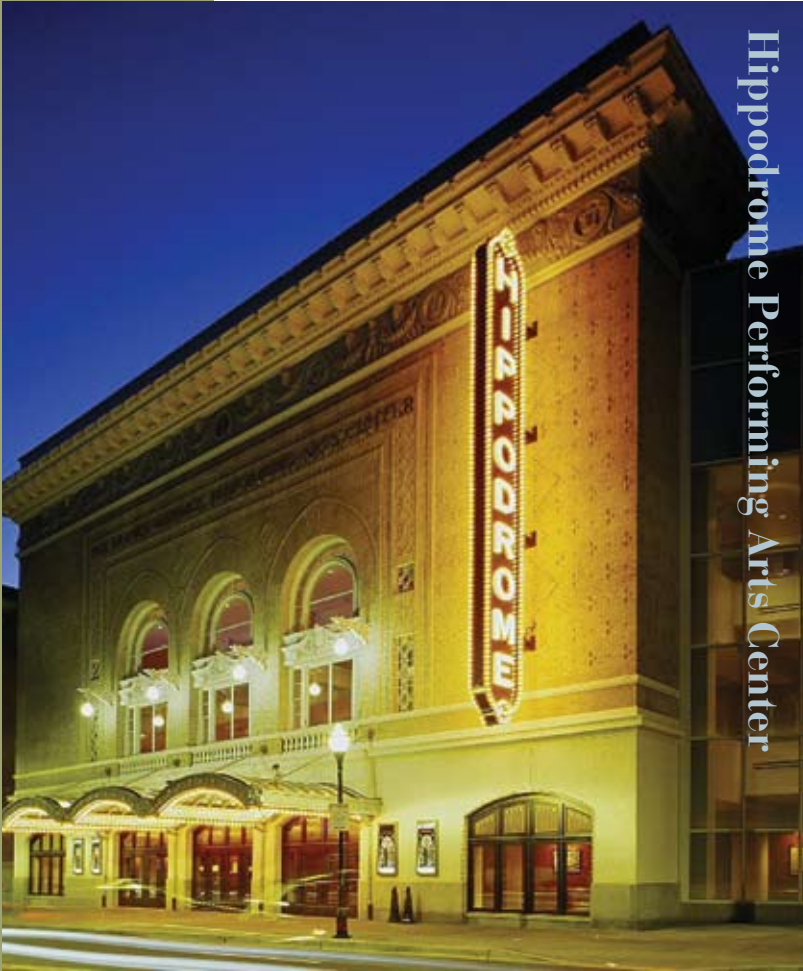
was the Eero Saarinen Visiting Professor in 1992. In 2003 Mori was awarded the Cooper Union Inaugural John Hejduk Award. In 2005, she received the Academy Award in Architecture from the American Academy of Arts and Letters, and the Medal of Honor from the New York City chapter of the AIA. She has served on the board of trustees of the Van Alen Institute and the Storefront for Art and Architecture, and has been an advisor to the New York Foundation for the Arts. She is currently an advisor to A+U Magazine and serves on the President's Council for the Cooper Union. Mori earned a Bachelor of Architecture degree from the Cooper Union and an Honorary Master of Architecture degree from Harvard University.

We are still in sponsorship solicitation mode looking for support for this year's series. I am hopeful that we will see enough support to realize our goal of offering 3 lectures this year thereby setting the stage to have a lecture annually in each of Central Pennsylvania's cities and continue our financial support of local scholarships for area students pursuing studies in architecture programs. I am thrilled to play a part in bringing these very talented and passionate practitioners to our area and hope that we can continue to grow the financial support and attendance at these events. □





## 2007 Excellence In Design Awards Gala – Honor Awards



Hippodrome Performing Arts Center

*Hippodrome Performing Arts Center in downtown Baltimore*



Greenway Tech Centre

*Greenway Tech Centre office facility*

Held at the newly constructed Sovereign Bank Stadium in downtown York, the 2007 Excellence In Design Awards Gala showcased the finest work of architects from throughout Central Pennsylvania. With representation by architectural practices from Harrisburg, Camp Hill, Mechanicsburg, Carlisle, Lancaster, Lebanon and York, the event continues to gain recognition as the premiere design awards affair for architects, engineers and building tradespersons in the region.

This year's distinguished jury included seven members of the AIA North Carolina Triangle Chapter including Frank Harmon, FAIA and Roger H. Clark, FAIA. The peer group of architects chose two projects for outstanding achievement including the historic preservation of the Hippodrome Performing Arts Center in downtown Baltimore by Murphy & Dittenhafer, Inc. of York and the Greenway Tech Centre office facility by NuTec Design Associates, Inc. As Honor Award recipients, each project demonstrated the highest level of design sensitivity, execution and care in achieving or exceeding project expectations.

## Hippodrome Performing Arts Center

Redeveloped for the Maryland Stadium Authority, the historic restoration of the Hippodrome Performing Arts Center included the following design team members and engineering consultant specialists:

Michael V. Murphy, AIA:  
*Principal-in-charge*

James P. Suttner, AIA:  
*Project Architect*

Frank E. Dittenhafer, FAIA:  
*Design Team*

### Consultants:

Marabito Consultants, Inc.

Henry Adams, LLC

Carroll Engineering, Inc.

Mahan Rykiel Associates

Fisher Dachs Associates

Fisher Marantz Stone

Matthew Mosca Historical Paints

### Construction Manager:

The Whiting-Turner Contracting Company

### Photographic Credits:

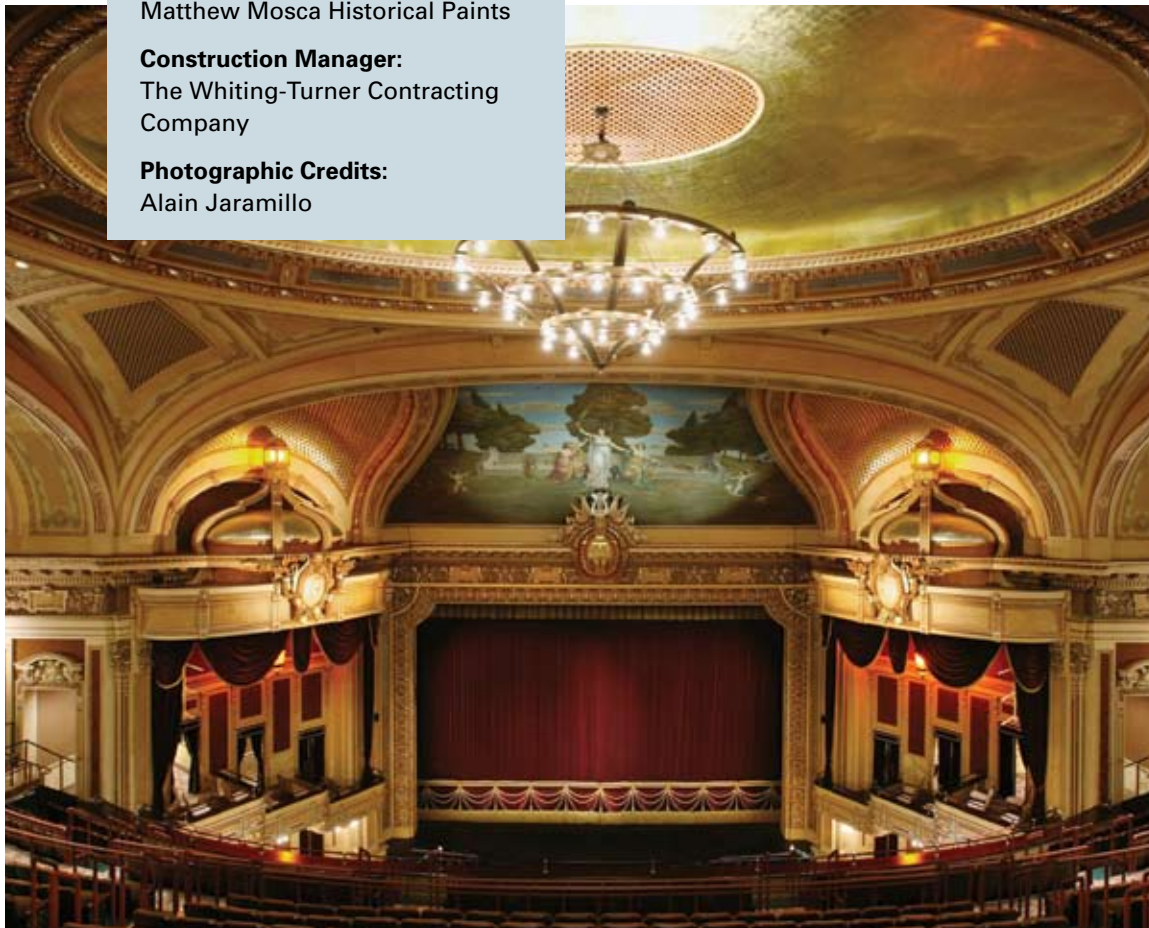
Alain Jaramillo



Before renovation

### The peer jury offered the following comments:

*"This is an excellent theater renovation and restoration that brought back what was exceptional about the original building while sensitively incorporating a multi-level lobby, increased seating, and a larger stagehouse to accommodate touring Broadway productions. New technical demands necessary in new buildings are also accommodated in the existing building without the observer being aware of them. This architect has exhibited an appropriate level of humility while honoring this 1914 building that had fallen into extensive disrepair."*







### Greenway Tech Centre

For the Greenway Tech Centre, NuTec Design Associates chose an adaptive re-use conversion of an historic 60,000 square foot cigar factory to create newly viable work spaces. The architects' team included the following members and consulting engineers:

Mark Ottenmiller:  
*Project Manager*

David N. McInay, AIA:  
*Project Architect*

**Engineers:**  
NuTec Design Associates, Inc.  
JDB Engineering, Inc.

**Consultants:**  
Kinsley Construction  
S.A. Comunale Co. Inc.  
Frey Lutz Corp.  
I. B. Abel Inc.

**Construction Manager:**  
Wagman Construction, Inc.

**Photographic Credits:**  
Scott Butcher

### Comments by the jury included:

*"This is a beautiful project throughout— from plan to detail. The new addition that fills in a shallow U-shaped factory building, providing a new entry, toilets, and vertical circulation, is at the right location and creates an excellent dialogue between the new and old. The new entry piece with its metal sunshade is the same width as the two flanking brick elements of the old building. The sunshade, which is beautifully detailed, interestingly appears as solid as the brick during the day, but is transparent at night. The exterior and interior of the existing factory were carefully and sensitively restored."* □



East and South face after renovation



# Letter to Associates: Blips on Your Radar

By Seth H. Wentz & Anthony Colestock

Before I get into this year's Associate events I would like to thank Sharlee Van Tine for all of the efforts she put into last year's Associate events. Recently Sharlee moved outside of our chapter. She was much appreciated and her personality and charisma will be missed. We wish Sharlee the best and hope to see her at the state AIA events.

With the new year upon us we have developed a new game plan for our chapter's Associate activities. As plans solidify and we have firm dates we will filter more information out to our Associates. The events to keep on your radar are as follows:

**1: Architectural Film Series:** We are putting together a 3 part film series. Two films will focus on architecture and the third will focus on an artist. We are hoping to coordinate the art film with an art exhibit happening this year in either NYC, Baltimore or Philadelphia. This series has me particularly excited. We will be starting the film series with the movie Sketches of Frank Gehry. Food and drink will be provided and an intriguing viewing environment is guaranteed. Look for more information on this series in the next month.

**2: Mentoring:** We all have IDP credits to fill in the volunteer category. Why not do them together and make a larger impact? We are planning a casual event with Thaddeus Stevens' AIAS. We will have the opportunity to socialize with the students over food and drink, sharing our stories about how we got where we are, our work environments, and lend any advice. This event will happen in April before the end of Thaddeus Stevens' school year.

**3: Construction Site Visits:** Having a hard time filling out your construction credits for the IDP? We are planning more visits to local projects that are under construction. We already have confirmation that we can get a tour of the Hershey Story Museum in the spring and there are more on the horizon. We will be sending out an email to find out which projects you would like to see the most and what times would work the best. Keep your eyes open for this email. Your opinions and schedules will drive these events.

This year looks more promising for Associates than any other I've been around for. If you have any questions or comments feel free to contact me via email (swentz@lscdesign.com). I'm looking forward to a great year for our Associates. □



We will be sending out an email to find out which projects you would like to see the most and what times would work the best.

**C.S. Davidson, Inc.**  
York • Gettysburg • Lancaster  
[www.csdavidson.com](http://www.csdavidson.com)

**Innovation**  
*Innovation is something that's hard to grasp until you see it. It's looking at the same old thing a little differently. It's approaching an old problem from a new angle. It's a blend of fresh ideas and solid experience.*

- ◆ Structural Engineering
- ◆ Site Design/Development
- ◆ Surveying/GPS

**Innovation • Tradition • Integrity**

# green...

## Architects Expo 2008

*April 18, 2008 Harrisburg- Hershey Sheraton*

In a continuing effort to provide opportunities for professional growth and fellowship AIA Central PA presents the 1st Annual Architects Expo. As our chapter prepares to celebrate its 100th anniversary in 2009 we look to build on the strengths of our past and the excitement of what is to come. We will set off in a direction built upon the success of our past and the anticipation of our future. This year we will be hosting a day long event, in lieu of the Quarterly Dinner meetings, that will provide an extended opportunity for our membership to gather, socialize, share thoughts about our communities, and grow professionally.

### Schedule of Activities:

Registration.....	8:30 to 10:00
Keynote Speaker & Breakfast .....	8:45 to 9:45
Morning Sessions .....	10:00 to 11:30
Buffet Luncheon Vendor Expo .....	11:45 to 2:00
Afternoon Sessions.....	2:15 to 3:45
AIA Central PA Social Hour .....	4:00 to 5:00

The theme for our inaugural event is "Green..." Given the ever growing public interest in an environmentally responsible architecture our profession has an unprecedented opportunity to step into a position of leadership. To become a sought after resource for insight to a more responsible built environment. What are the issues? Everyone talks about green architecture and most readily identify with the many merits, but the barriers to creating a "certified" green project are often insurmountable on the majority of projects. One reason put forth is the lack of professional resources...

... what are your thoughts? The one thing we can all be certain of is that "Green..." will continue to be a defining issue of our generation.

The exciting agenda will kick-off with breakfast and a keynote speaker addressing "Green..." The rest of the day will include morning and afternoon professional education sessions, a buffet lunch and a vendor exposition. The expo will close with a social hour that will give everyone an opportunity to reflect upon the day and the event, while looking forward to the future of our profession and the weekend. □

Come one, come all, and support your Chapter as we work to advance the practice of architecture.

## ACE Mentoring Program

SMB&R, Inc. is a proud sponsor of the ACE Mentoring Program of Central PA. In addition to being a sponsor, three SMB&R employees, Preston D. Lytle, P.E., Darius S. Bharucha, P.E. and Hal T. McDonald, AIA are volunteering as mentors for the program.

The ACE Mentor Program introduces local high school students to the wide range of career opportunities available in architecture, construction and engineering. Working with industry professionals, students participate as teams on projects that give them hands-on experience planning and designing cutting-edge buildings.

Industry professionals volunteer to become mentors to high school students in order to introduce them to the professions and encourage them to pursue studies and careers in these fields. In return, the industry gets a much-needed boost of new talent.

The ACE Mentor Program of America, Inc. is working hard to make sure there are enough architects, construction managers and engineers to fill the industry's needs ten years from now. □



Working with industry professionals, students participate as teams on projects that give them hands-on experience.





**AIA Central Pennsylvania**  
 A Chapter of The American Institute of Architects  
 208 N. Third Street, Suite 400  
 Harrisburg, PA 17101

PRESORTED  
 STANDARD MAIL  
 U.S. POSTAGE  
**PAID**  
 HARRISBURG, PA  
 PERMIT NO. 478

## BUILDING A BETTER WORLD.

You'll find sustainable design at its finest with **Verde™**, our line of post-industrial content aggregate. Environmental responsibility was the motivation for this eco-friendly, lightweight line, which offers all of the benefits of traditional concrete masonry units while utilizing regional, recycled materials.

- LEED Certified
- Meets ASTM C331
- Available in select colors
- Available on all Beavertown Block lines



"Where customers send their friends"

[www.beavertownblock.com](http://www.beavertownblock.com)

3612 Paxtonville Road  
 Middleburg, PA 17842  
**(570) 837-1744**  
**Fax (570) 837-1591**  
**1-800-597-2565**

*Designing the Framework  
 for Architectural Excellence*



**Extraordinary Service....  
 ....Exceptional Solutions**



**BAKER, INGRAM & ASSOCIATES**  
 STRUCTURAL ENGINEERS

[www.bakeringram.com](http://www.bakeringram.com)

PHONE 717.290.7400 FAX 717.290.7402  
 PENNSYLVANIA • DELAWARE • NEW JERSEY • MARYLAND